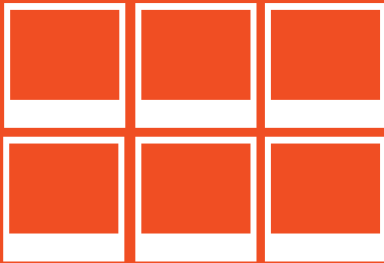


# Apache Solr™ for **FSI SERVER**

## User Manual



Version 4.5



# Apache Solr™ for **FSI Server**

NeptuneLabs GmbH  
Lagesche Str. 32  
D-32657 Lemgo  
Germany

© 2009-2013 NeptuneLabs. All rights reserved.

## **Last updated: November 2013**

|                     |     |
|---------------------|-----|
| FSI Server Version  | 3.0 |
| Apache Solr Version | 4.5 |
| Manual Revision     | 002 |

All brands and product names are trademarks or registered trademarks of the respective producers.

FSI Viewer is a registered trademark of NeptuneLabs GmbH, Germany.

Apache, Apache Solr, and Solr are trademarks of The Apache Software Foundation. No endorsement by The Apache Software Foundation is implied by the use of these marks.

# Apache Solr™ for FSI Server

## Configuring Solr for FSI Server

FSI Server 3 uses Apache Solr as a database to allow searching in asset metadata. The Solr server is not embedded in FSI Server as the database was in FSI Server versions 1 and 2.

If you require searching, for example in FSI Pages or FSI Pages mobile, then you will have to provide a Solr instance for FSI Server to use. This document will assist you in setting up a new Solr server or configuring an existing Solr server to work with FSI Server. If you are running FSI Server on Microsoft Windows and have installed it using the Windows installer version from the FSI Viewer website then the Solr server is automatically installed together with FSI Server, FSI Administrator and FSI Cache. In that case the setup instructions are not relevant for your installation.

If you are already familiar with Solr and want to use an existing Solr instance for your FSI Server, then you can skip sections I and II.

### I. What is Solr?

Solr is an enterprise search platform developed at the Apache Foundation. Solr is open source and written in Java. It runs as a standalone full-text search server within a servlet container like Apache Tomcat. Solr is based on Apache Lucene and provides a REST-like API to update and query data, allowing client development in almost any programming language.

### II. Setting up Solr for FSI Server

For your convenience NeptuneLabs has packaged a preconfigured Solr server which can be downloaded from the FSI Viewer website at <http://www.fsi-viewer.com>. This minimizes the installation efforts and allows an easy installation even for unexperienced users. This package is a web archive (war) just like the FSI Server and can therefore simply be deployed in an arbitrary tomcat instance. As FSI Server and Solr/Lucene are both memory critical applications they should not be deployed under the same JVM other than for testing.

**IMPORTANT:** For production environments it is highly recommended to deploy the Solr package in an own Tomcat/JVM instance. In high load environments you should consider installing the Solr instance on separate hardware.

As mentioned above the Solr server from the FSI Viewer website is preconfigured, meaning the core used by FSI Server is already installed and activated with the correct

---

configuration and schema. By default the data itself will be saved within the servlet context, just like FSI Servers internal storage you should consider relocating this to a different directory. The following steps will lead through the installation of Solr using the package provided by NeptuneLabs and will enable the Search in FSI Server.

1. Download the Solr Package (solr.war) from <http://www.fsi-viewer.com>
2. Deploy Solr
  - Copy the downloaded war-file to the Tomcats webapps directory.
3. Configure access restrictions to the Solr server
  - By default access to the Solr server is limited to connections from local ip addresses. If you are installing the package on a different machine, then you will have to disable this limitation by commenting out the Valve-configuration in webapps/solr/META-INF/context.xml
  - The access to the Solr server is not restricted to a specified user, but should be when the above limitation is removed. To enable this security feature, please uncomment the "security constraint" and the "login-config" blocks in webapps/WEB-INF/web.xml and add an appropriate user to your Tomcat installation, e.g. by adding the following lines to your tomcat-users.xml:

```
<tomcat-users>
  <role rolename="solr_user"/>
  <user username="fsi" password="mypassword" roles="solr_
user"/>
</tomcat-users>
```
4. Enable the search in FSI Server
  - Set the "enabled" attribute of the "search" sections to true in the sourcemanager.xml and requestprocessor.xml and set the login credentials according to the previous step if required.or:
  - Log in to FSI Administrator, navigate to your FSI Server and enable the search sections in the Request Processor Settings and the Source Manager Settings screens. Configure login credentials if required.
5. Wait for the FSI Server to finish the automatic build of the search database.

### III. Configuring an existing Solr server

Presuming that you have a running Solr server and also have some experience administrating a Solr server. If that is the case, you can create a new Solr core using the files from the contrib directory in your FSI Server deployment and enable the search in FSI Server as described in step 4 of the previous chapter.

## **Apache Solr for FSI Server**

### **NeptuneLabs GmbH**

Lagesche Str. 32  
32657 Lemgo  
Germany

Fon: +49 5261-28732-0  
Fax: +49 5261-28732-29  
eMail: [info@neptunelabs.com](mailto:info@neptunelabs.com)  
http: [www.neptunelabs.com](http://www.neptunelabs.com)  
[www.fsi-server.com](http://www.fsi-server.com)

No part of this manual, including the software described in it, may be reproduced, transmitted, transcribed, stored in a retrieval system, or translated into any language in any form or by any means, except documentation kept by the purchaser for backup purposes, without the express written permission of NeptuneLabs.

Specifications and information contained in this manual are furnished for informational use only and are subject to change at any time without notice, and should not be construed as a commitment by NeptuneLabs. NeptuneLabs assumes no responsibility or liability for any errors or inaccuracies in this manual, including the software described in it.

**Copyright 2009-2013 NeptuneLabs GmbH, Germany. All rights reserved.**



[www.fsi-viewer.com](http://www.fsi-viewer.com)

**Neptune**  
**l a b s**

Internet Application Development

**NeptuneLabs GmbH**

Lagesche Str. 32

32657 Lemgo

Germany

fon: + 49 5261 - 28732- 0

fax: + 49 5261 - 28732- 29

[info@neptunelabs.com](mailto:info@neptunelabs.com)

[www.neptunelabs.com](http://www.neptunelabs.com)